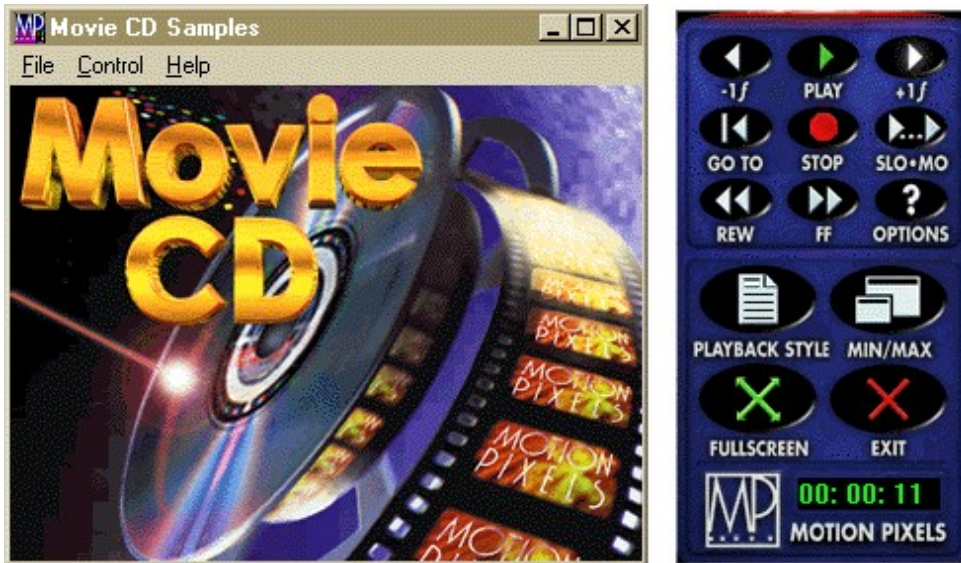


Using the Movie CD Remote Control



The Motion Pixels Movie CD Player automatically loads this configuration on the Windows desktop. The following is a description of the virtual remote control and its related functions. Please note that some Remote Control functions, such as rewind, fast-forward, and slow-motion, only work with the windowed video.



Minus One Frame - This button reverses the still video image one frame at a time.



Plus One Frame - Advances the still video image one frame at a time.



Play - Plays the video forward at normal speed.



Stop - Halts current video playback. A single video frame will appear in the window.



Slow Motion - Plays the video forward at 1/4 normal speed. Audio can be disabled from the Options menu.



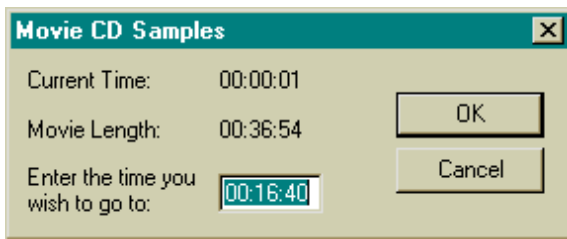
Rewind - Plays the video backwards. Video rewind speed and audio mute can be selected via the Options menu.



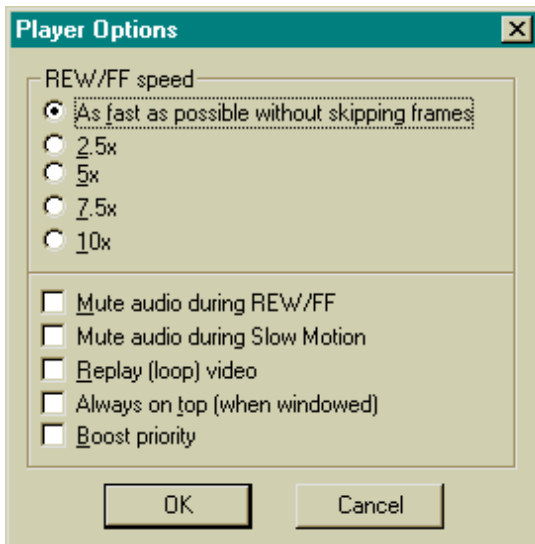
Fast Forward - Plays the video forward as fast as possible without skipping frames. Video fast-forward speed can be accessed through the Options menu. Audio mute is also available.



Go To - The Go To function allows the user to type in a time in hours, minutes and seconds up to the total length of the movie. The video will advance to the chosen time. Click on "Ok" to continue.



Options - The Options menu contains several different options for video playback. Click any of the checkboxes to select the desired option.



The "Rewind/Fast Forward Speed" can be adjusted to play as fast as possible without skipping frames. The other speed options are ratios of normal playback speed.

Check the "Mute Audio During REW/FF" to silence the audio during fast-forward or rewind. Also, check the Mute audio to silence the audio during slow-motion.

"Replay (loop) Video" constantly loops the video from beginning to end.

"Always On Top(when windowed)" keeps the video window overlaid other open applications, such as Notepad or Calculator.

"Boost Priority" allocates most of the system resources to video playback when other applications are open. Please note that the Remote Control may not immediately respond to user input with this options enabled.



Exit - This closes the video window as well as the remote control applications.



Min/Max - Displays the video window and the remote control on top of the existing Windows desktop. Clicking this button will toggle between this mode and hiding the desktop. Only the video window and remote are visible.



Fullscreen - Plays the video fullscreen according to the specified Fullscreen Enlargement style selected. See the Playback Style dialog box for more information.



Playback Style - Motion Pixels offers up to 13 different resizing options for video playback in a window or fullscreen. 5 screen resolutions are also available as well as video chipset detection. Please consult the Using Aware documentation for more information about Motion Pixels resizing techniques.

